

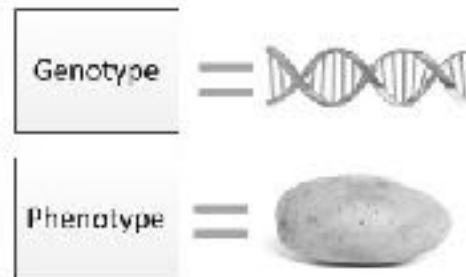
Probability is a number that describes how likely it is that an event will occur.



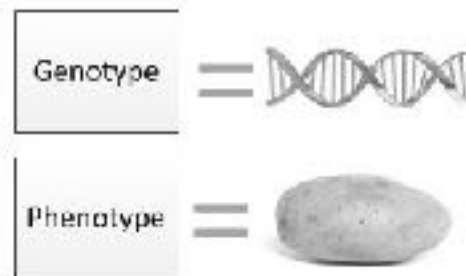
A Punnett Square is a chart that shows all the possible combinations of alleles that can result from a genetic cross.

	A	a
A	AA	Aa
a	Aa	aa

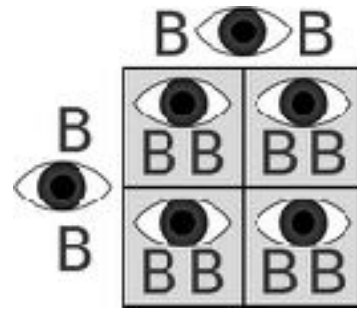
An organism's phenotype is its physical appearance, or visible traits.



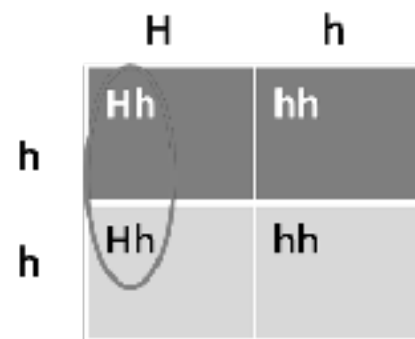
An organism's genotype is its genetic makeup, or allele combination.



When an organism has two identical alleles for a trait it is said to be homozygous.



An organism that has two different alleles for a trait is heterozygous for that trait.



A recessive allele is hidden whenever the dominant allele is present.

tt

Codominance is when the alleles are neither dominant nor recessive.

